

## Whitworth Building

LAST UPDATED December 2016

### **Purpose:**

The purpose of a Generic Emergency Evacuation Plan (GEEP) is to enable visitors to the building with restricted mobility or those who may not be able to evacuate unaided to become familiar with the layout, evacuation procedures, available equipment and communication devices.

If you feel that this document does not provide you with sufficient information or that you require further assistance, please contact the Loughborough University Fire Officer on 01509 222182.

### **The building:**

Whitworth building comprises of 11 floors. 10 floors are accessible by using the lifts. Emergency egress using these lifts is not possible during an evacuation. Several accessible fire exits are available at ground level.

### **Action required on hearing the fire alarm:**

If able, you should leave the building immediately by the nearest fire exit (see attached floor plan) and report to the assigned assembly point for the building.

### **Other recommendations:**

It is recommended that all visitors to the Whitworth building should familiarise themselves with the fire alarm signals and floor layout. Floor plans and evacuation equipment locations have been provided with this document.

### **Equipment provided:**

Accessible fire exits are available on the ground floor of the building.



YOUR ASSEMBLY POINT IS:

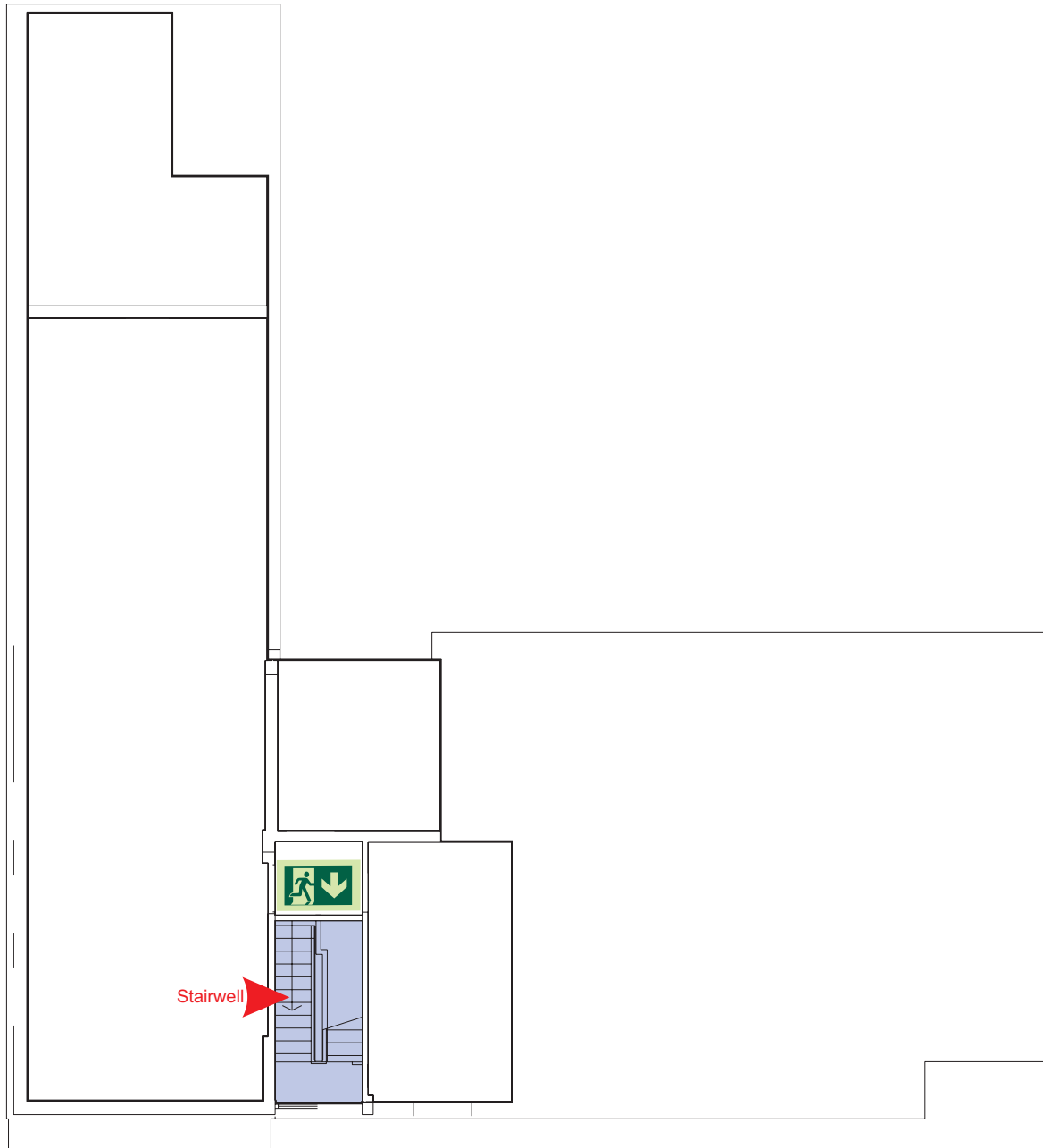
Fire Assembly Point 25

# Generic Emergency Evacuation Plan

Loughborough  
University

## Whitworth Building

LAST UPDATED December 2016



Basement



Accessible final exit



Evacuation lift



Safe refuge



Evacuation  
coms



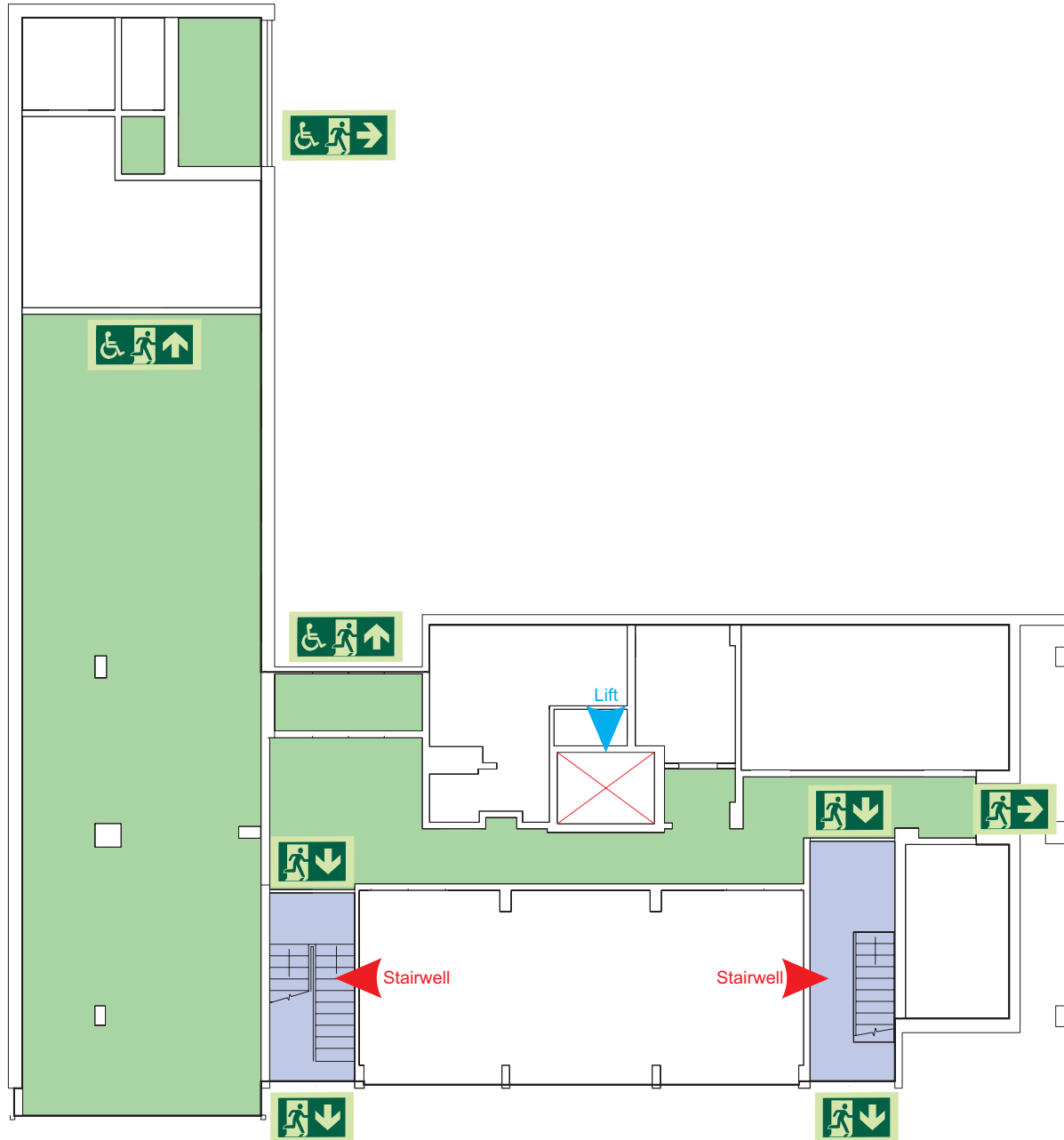
Lift  
Non  
evacuation  
lift

# Generic Emergency Evacuation Plan

Loughborough University

## Whitworth Building

LAST UPDATED December 2016



Ground



Accessible final exit



Evacuation lift



Safe refuge



Evacuation coms



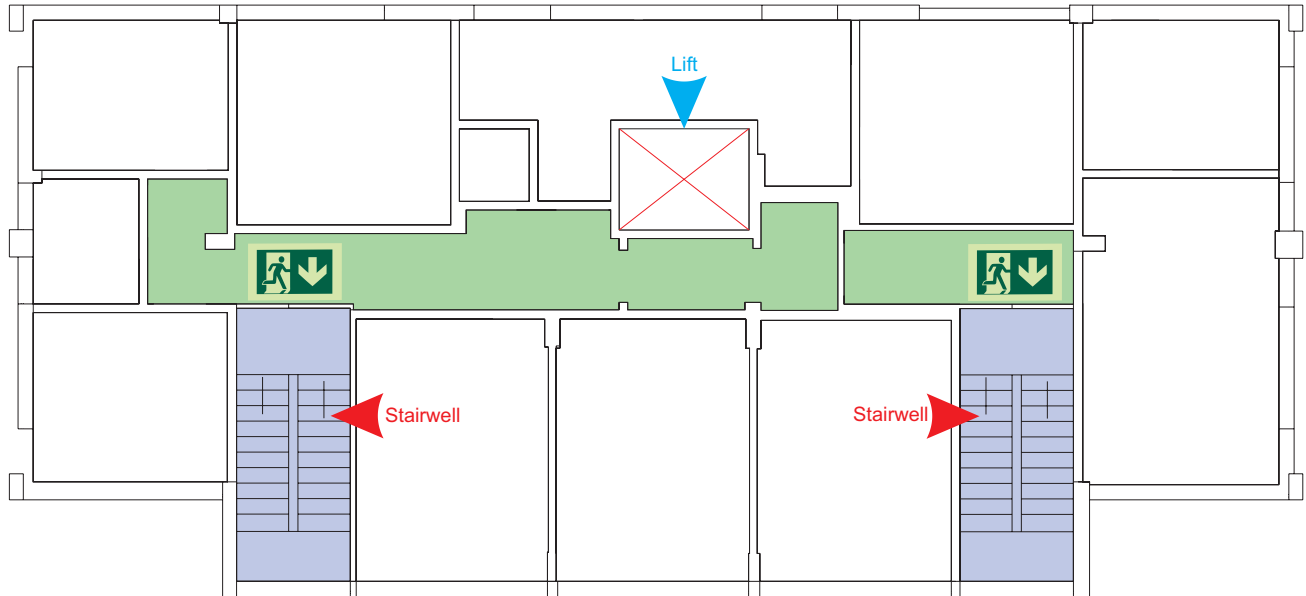
Non evacuation lift

# Generic Emergency Evacuation Plan

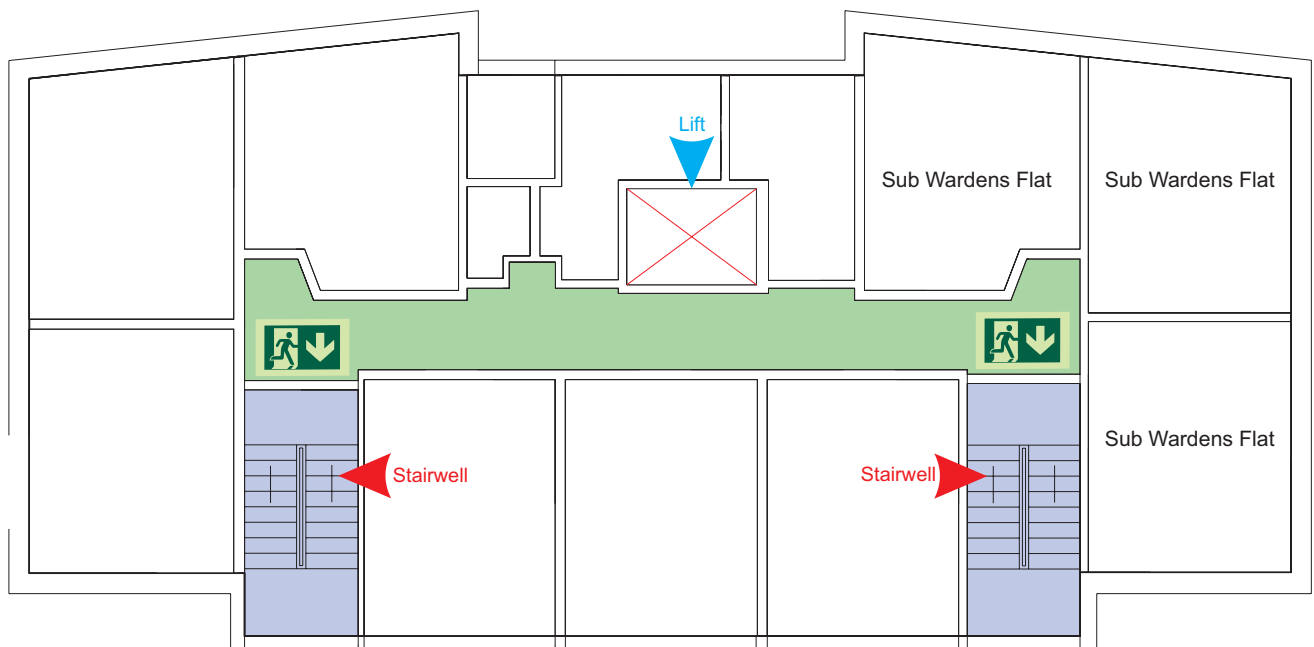
Loughborough University

## Whitworth Building

LAST UPDATED December 2016



First



Second



Accessible final exit



Evacuation lift



Safe refuge



Evacuation coms



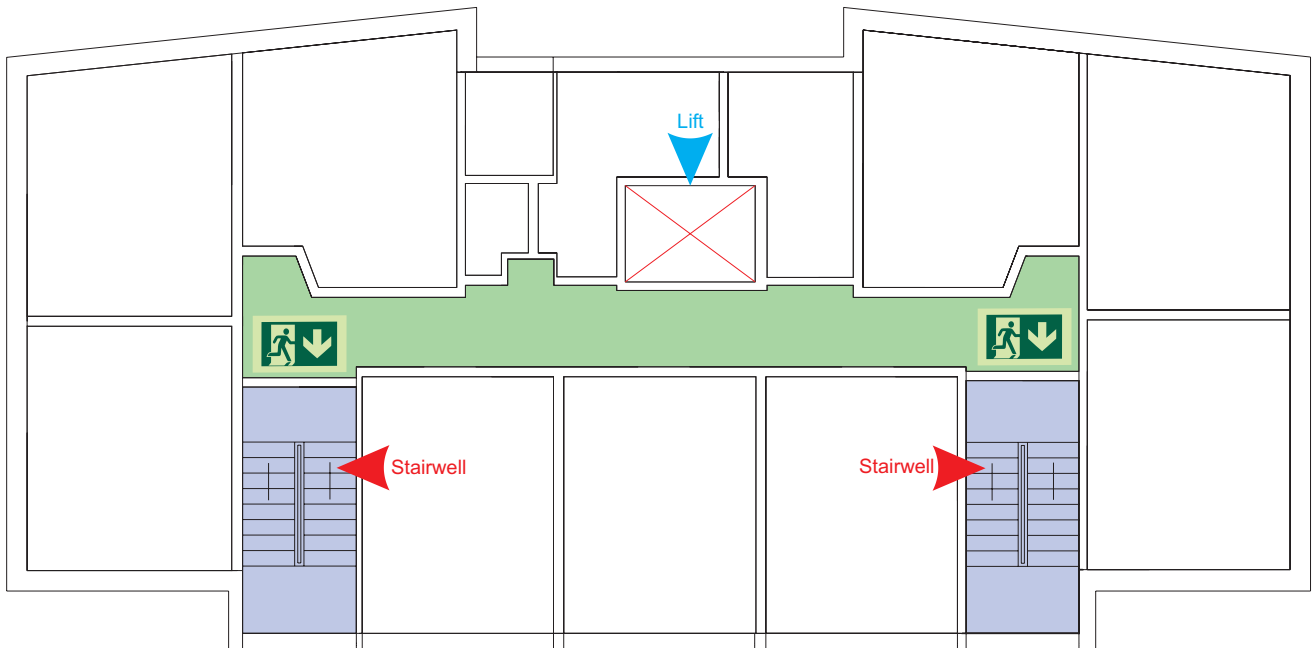
Non evacuation lift

# Generic Emergency Evacuation Plan

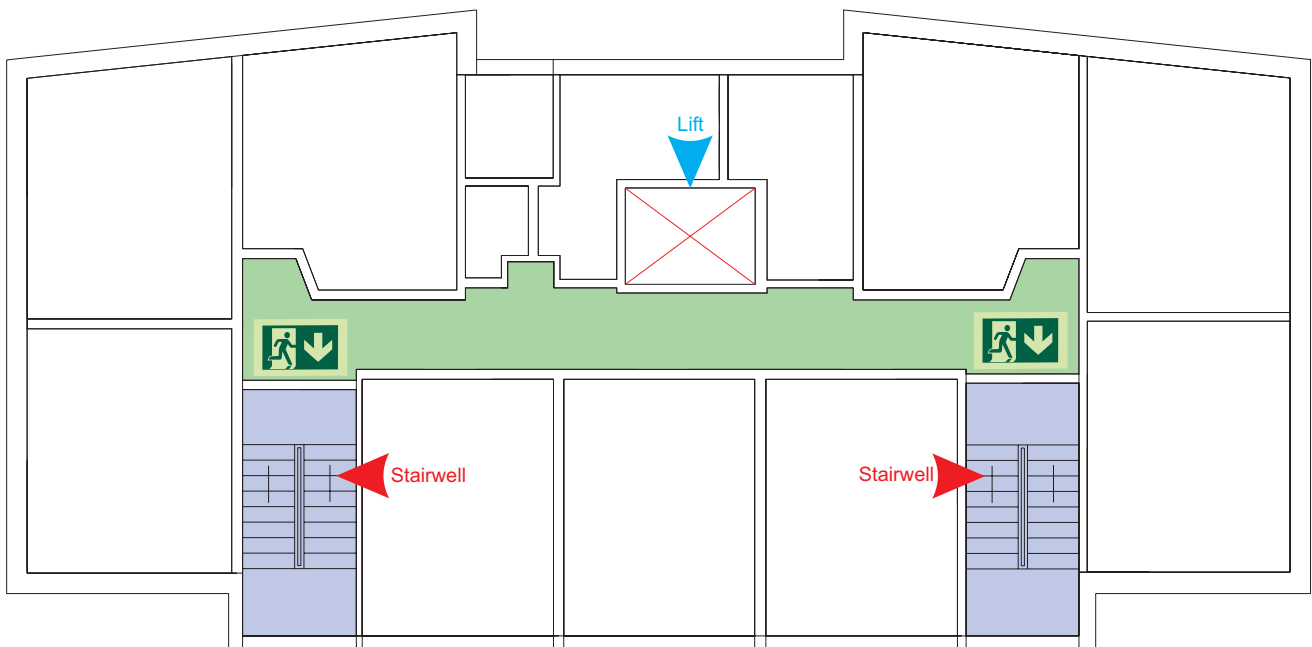
Loughborough University

## Whitworth Building

LAST UPDATED December 2016



Third



Fourth



Accessible final exit



Evacuation lift



Safe refuge



Evacuation coms



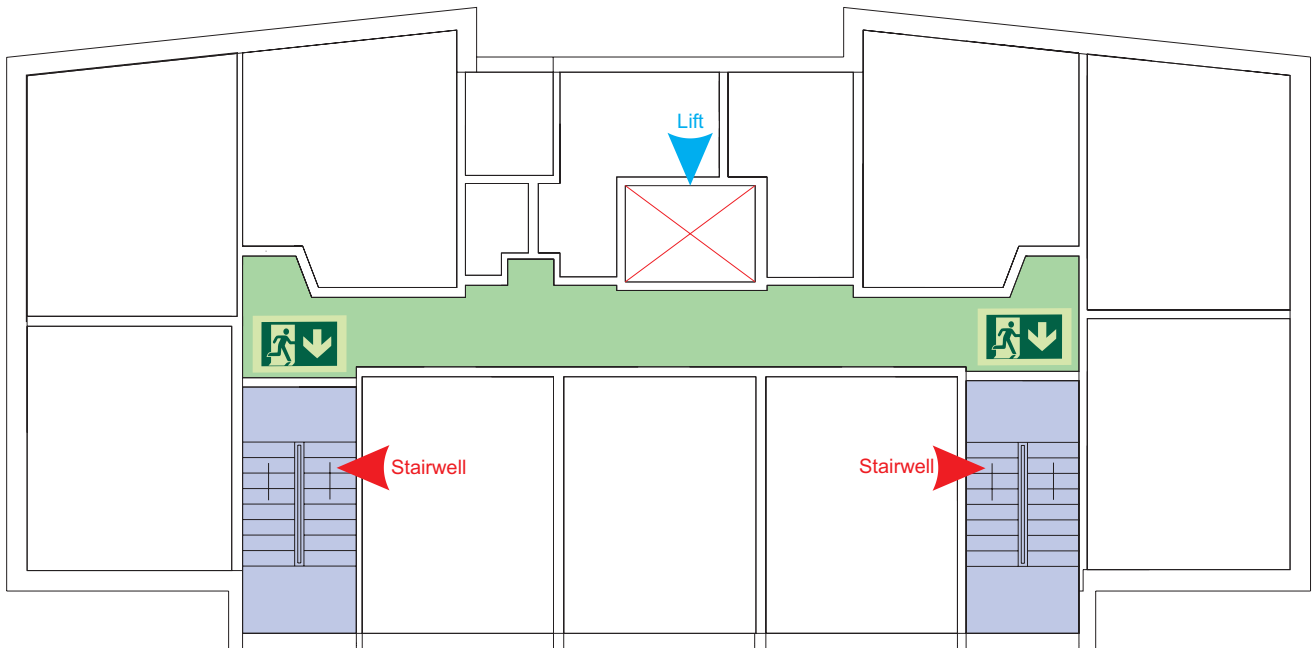
Non evacuation lift

# Generic Emergency Evacuation Plan

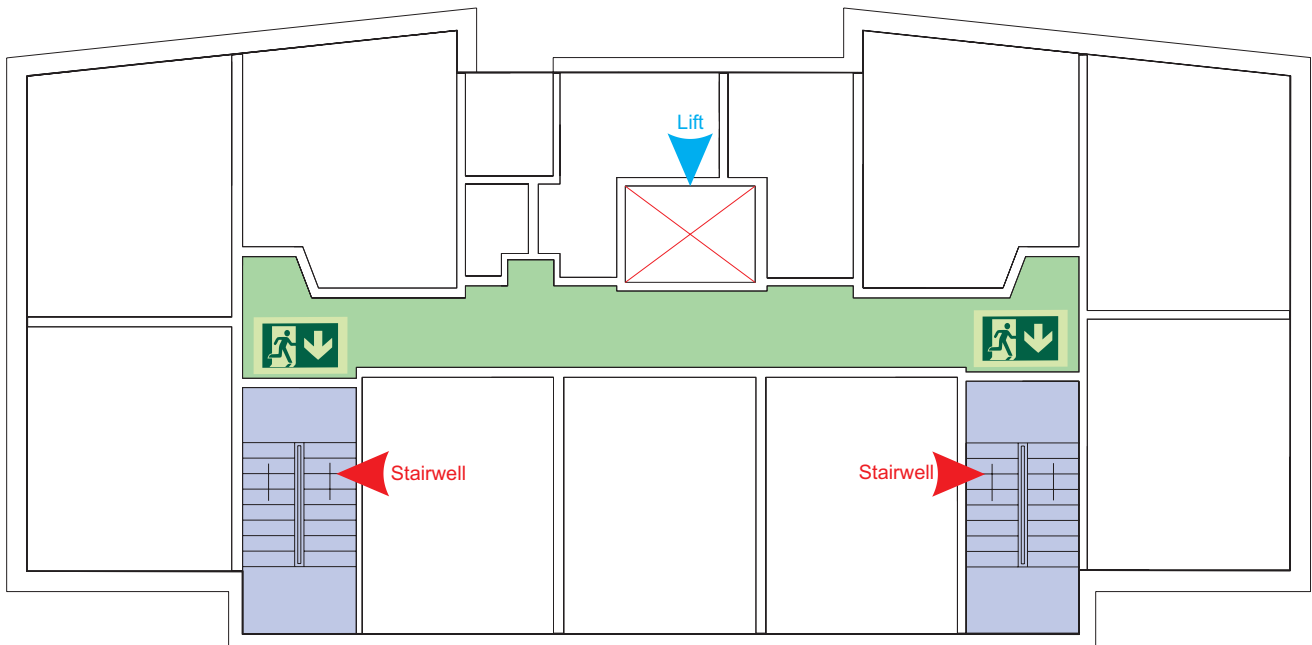
Loughborough University

## Whitworth Building

LAST UPDATED December 2016



Fifth



Sixth



Accessible final exit



Evacuation lift



Safe refuge



Evacuation coms



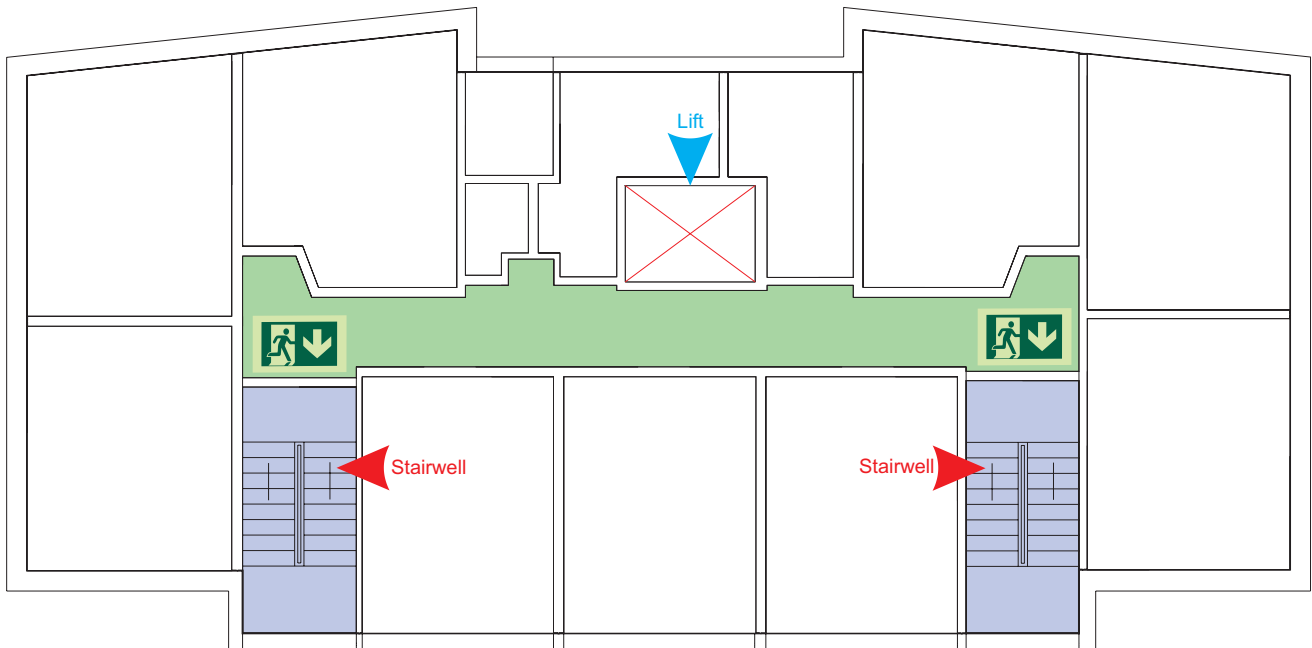
Non evacuation lift

# Generic Emergency Evacuation Plan

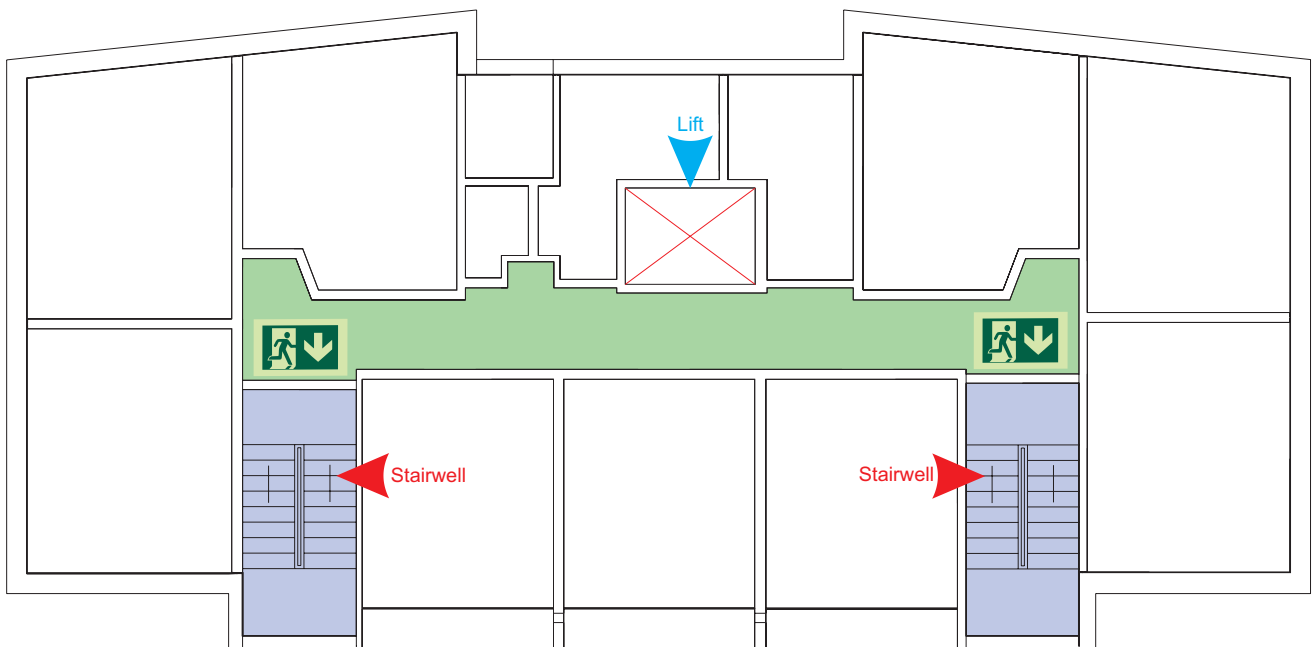
Loughborough University

## Whitworth Building

LAST UPDATED December 2016



Seventh



Eighth



Accessible final exit



Evacuation lift



Safe refuge



Evacuation coms



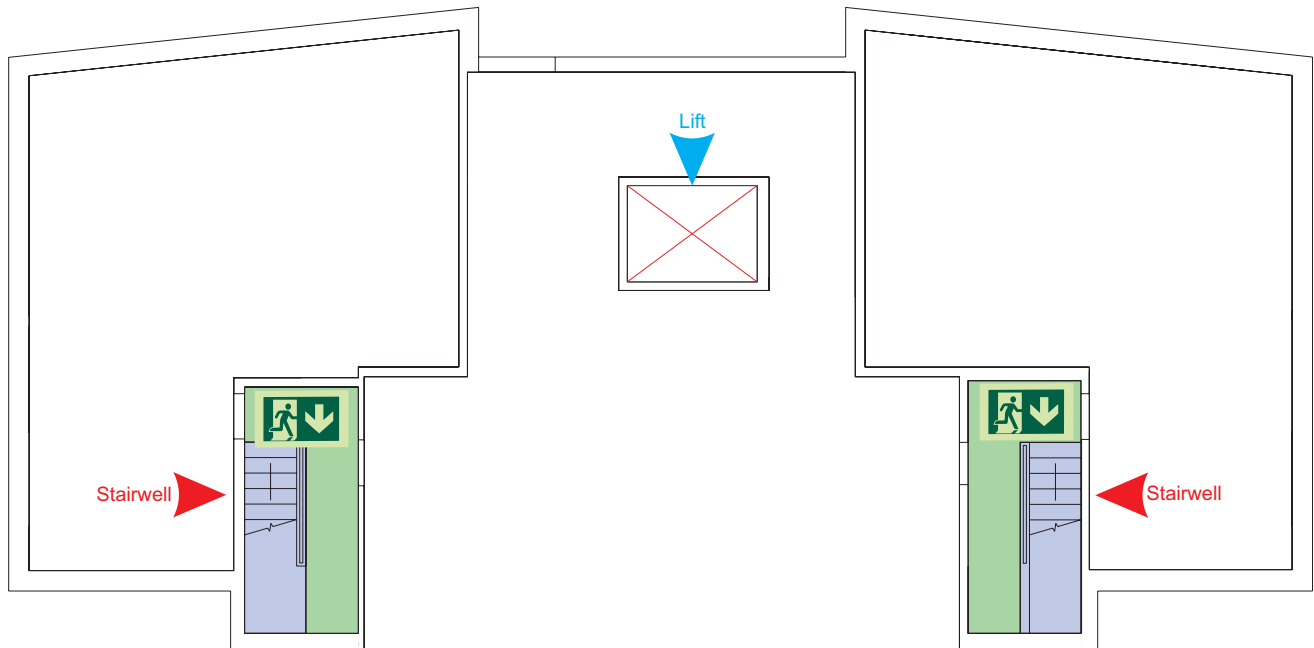
Non evacuation lift

# Generic Emergency Evacuation Plan

Loughborough University

## Whitworth Building

LAST UPDATED December 2016



Plant Room



Accessible final exit



Evacuation lift



Safe refuge



Evacuation coms



Non evacuation lift



# FIRE ESCAPE PLAN

## LOUGHBOROUGH UNIVERSITY FIRE INSTRUCTIONS

### ANY PERSON DISCOVERING A FIRE



Sound the alarm.  
Operate the nearest fire alarm call point.



Telephone Security on the emergency number 0800 526966.



Do not attack fire with extinguisher unless trained to do so.

### ON HEARING THE ALARM



Evacuate building and go to assembly point.  
Your assembly point is:-

**Assembly Point 25**

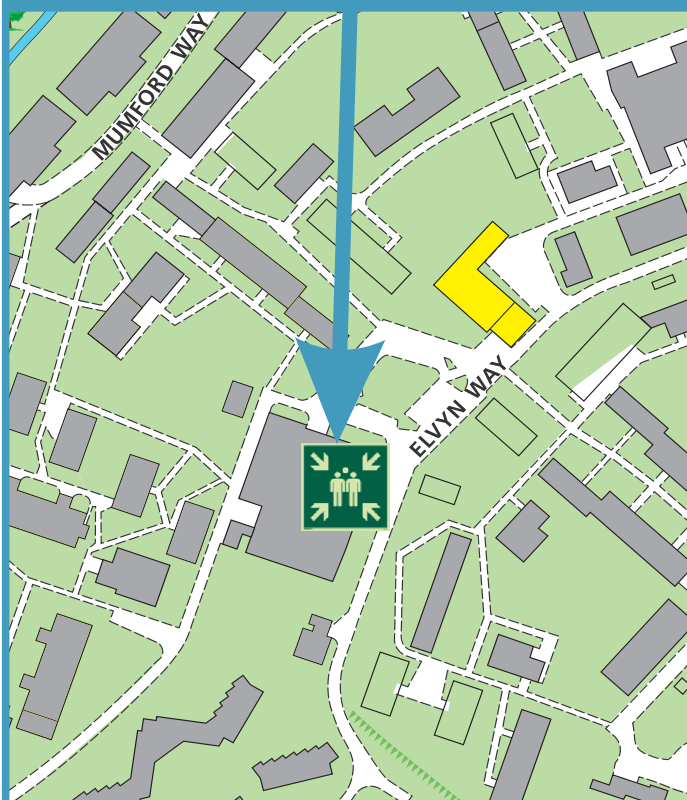


When alarm is given - do not panic, do not run.  
Leave the building following the fire emergency exit signs.

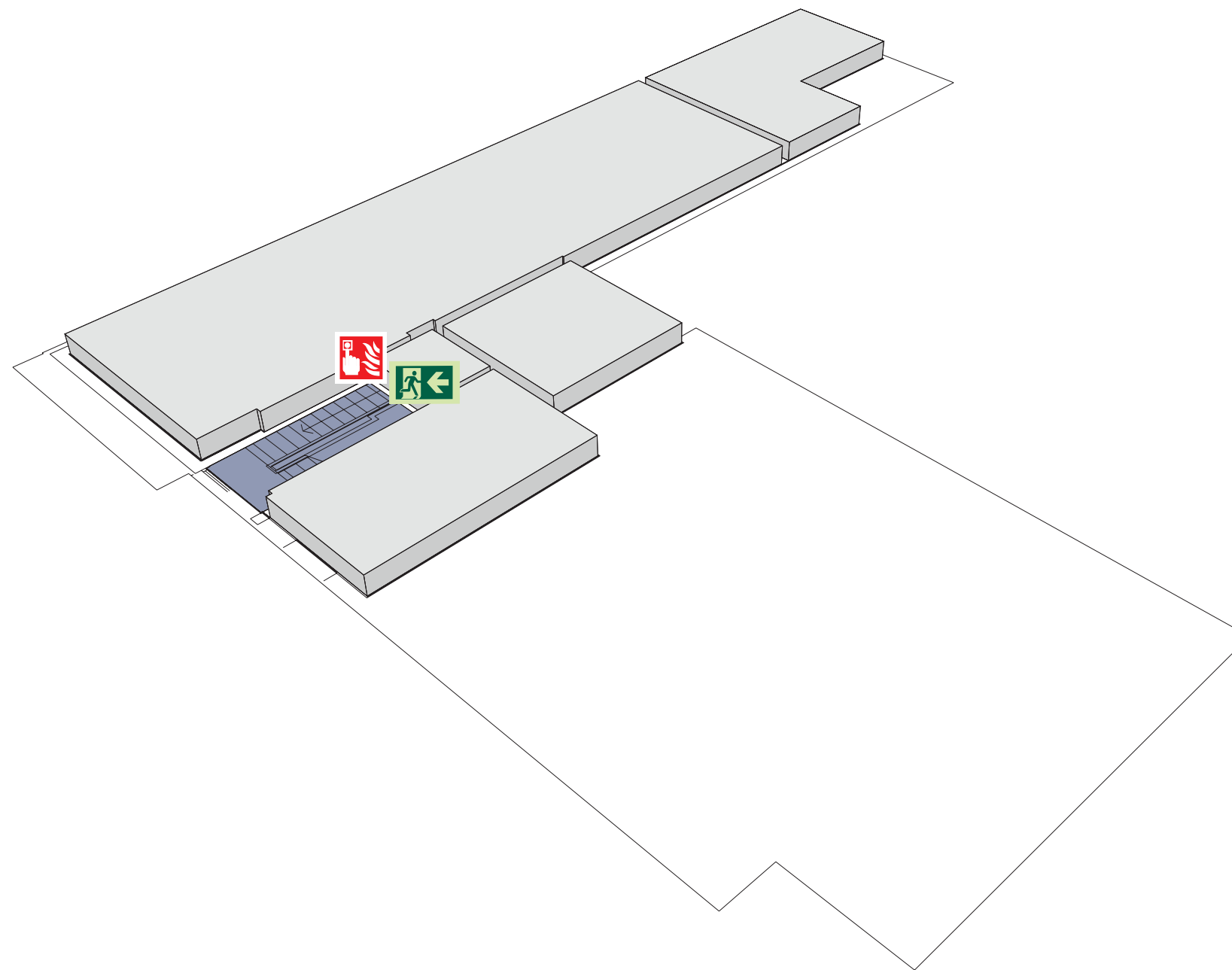


Do not re-enter the building unless told to do so by the Fire Marshall, Warden or Fire Service.

ASSEMBLY POINT 25 IS ALLOCATED TO THE BUILDINGS SHOWN IN YELLOW



## Whitworth Building Basement



Fire alarm  
Call point



Fire exit



Wheelchair  
accessible exit



Fire escape route



Assembly point



Safe refuge



Evac lift



Evac coms



Non evac coms

Loughborough  
University

# FIRE ESCAPE PLAN

## LOUGHBOROUGH UNIVERSITY FIRE INSTRUCTIONS

### ANY PERSON DISCOVERING A FIRE



Sound the alarm.  
Operate the nearest fire alarm call point.



Telephone Security on the emergency  
number 0800 526966.



Do not attack fire with extinguisher  
unless trained to do so.

### ON HEARING THE ALARM



Evacuate building and go to assembly  
point.

Your assembly point is:-

**Assembly Point 25**

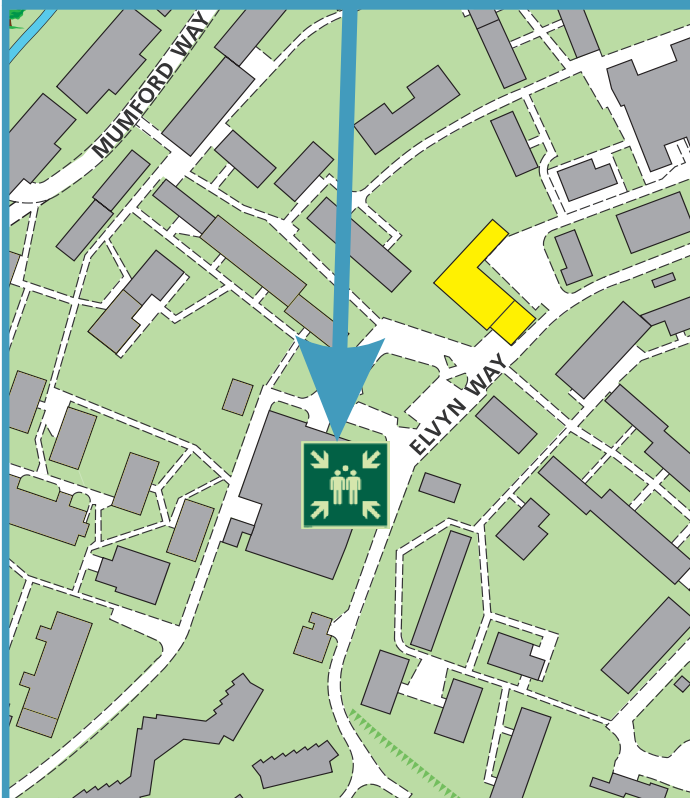


When alarm is given - do not panic, do  
not run.  
Leave the building following the fire  
emergency exit signs.

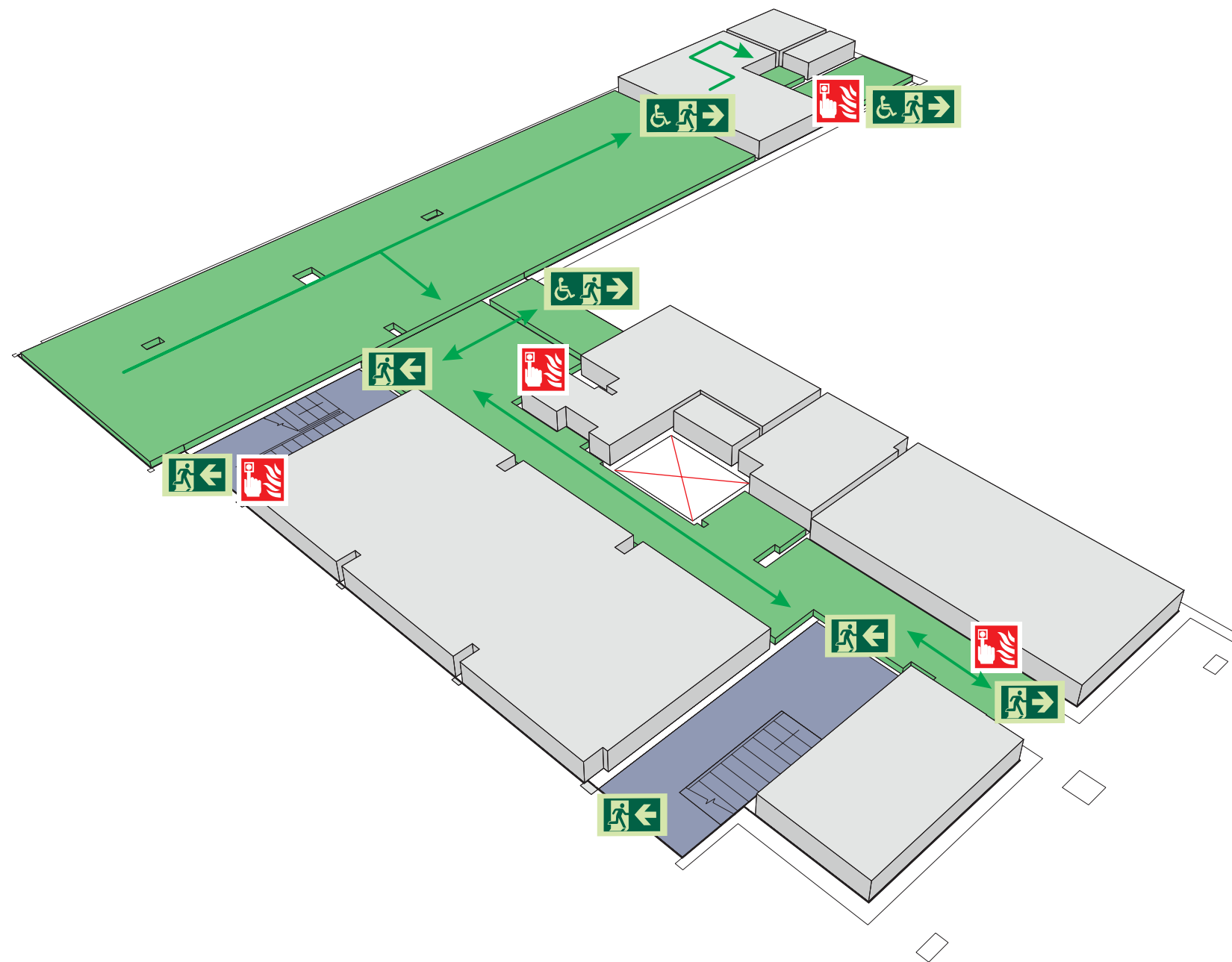


Do not re-enter the building unless told  
to do so by the Fire Marshall, Warden or  
Fire Service.

ASSEMBLY POINT 25 IS ALLOCATED TO THE  
BUILDINGS SHOWN IN YELLOW



## Whitworth Building Ground Floor



Fire alarm  
Call point



Fire exit



Wheelchair  
accessible exit



Fire escape route



Assembly point



Safe refuge



Evac lift



Evac coms



Non evac coms

Loughborough  
University

# FIRE ESCAPE PLAN

## LOUGHBOROUGH UNIVERSITY FIRE INSTRUCTIONS

### ANY PERSON DISCOVERING A FIRE



Sound the alarm.  
Operate the nearest fire alarm call point.



Telephone Security on the emergency number 0800 526966.



Do not attack fire with extinguisher unless trained to do so.

### ON HEARING THE ALARM



Evacuate building and go to assembly point.  
Your assembly point is:-

**Assembly Point 25**

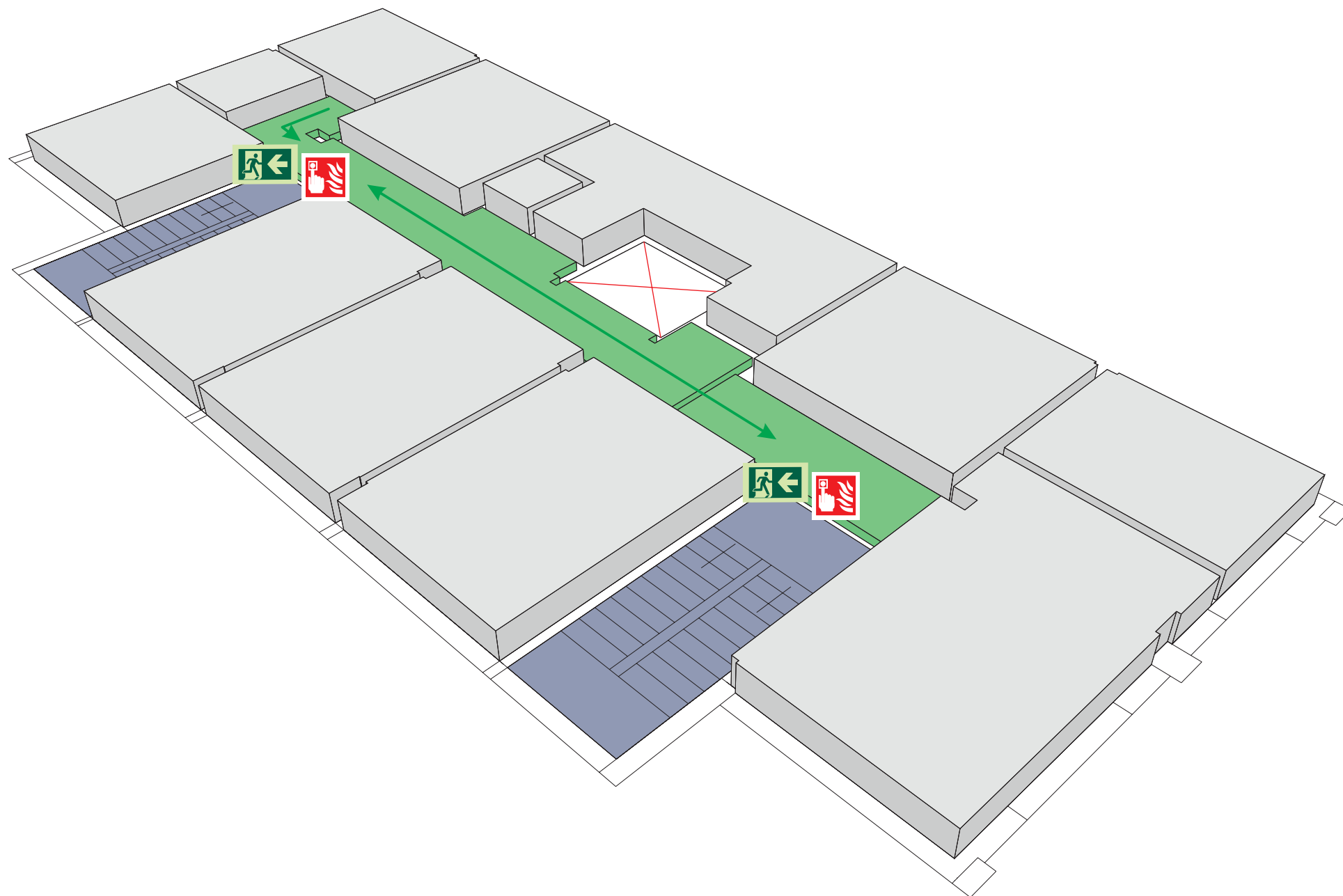
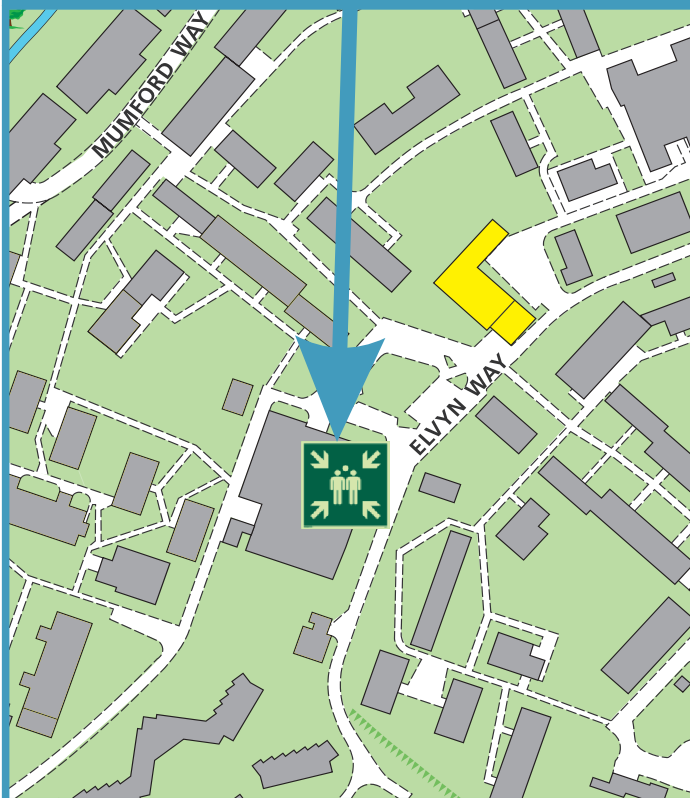


When alarm is given - do not panic, do not run.  
Leave the building following the fire emergency exit signs.



Do not re-enter the building unless told to do so by the Fire Marshall, Warden or Fire Service.

ASSEMBLY POINT 25 IS ALLOCATED TO THE BUILDINGS SHOWN IN YELLOW



## Whitworth Building First Floor



Fire alarm  
Call point



Fire exit



Wheelchair  
accessible exit



Fire escape route



Assembly point



Safe refuge



Evac lift



Evac coms



Non evac coms

Loughborough  
University

# FIRE ESCAPE PLAN

## LOUGHBOROUGH UNIVERSITY FIRE INSTRUCTIONS

### ANY PERSON DISCOVERING A FIRE



Sound the alarm.  
Operate the nearest fire alarm call point.



Telephone Security on the emergency number 0800 526966.



Do not attack fire with extinguisher unless trained to do so.

### ON HEARING THE ALARM



Evacuate building and go to assembly point.  
Your assembly point is:-

**Assembly Point 25**

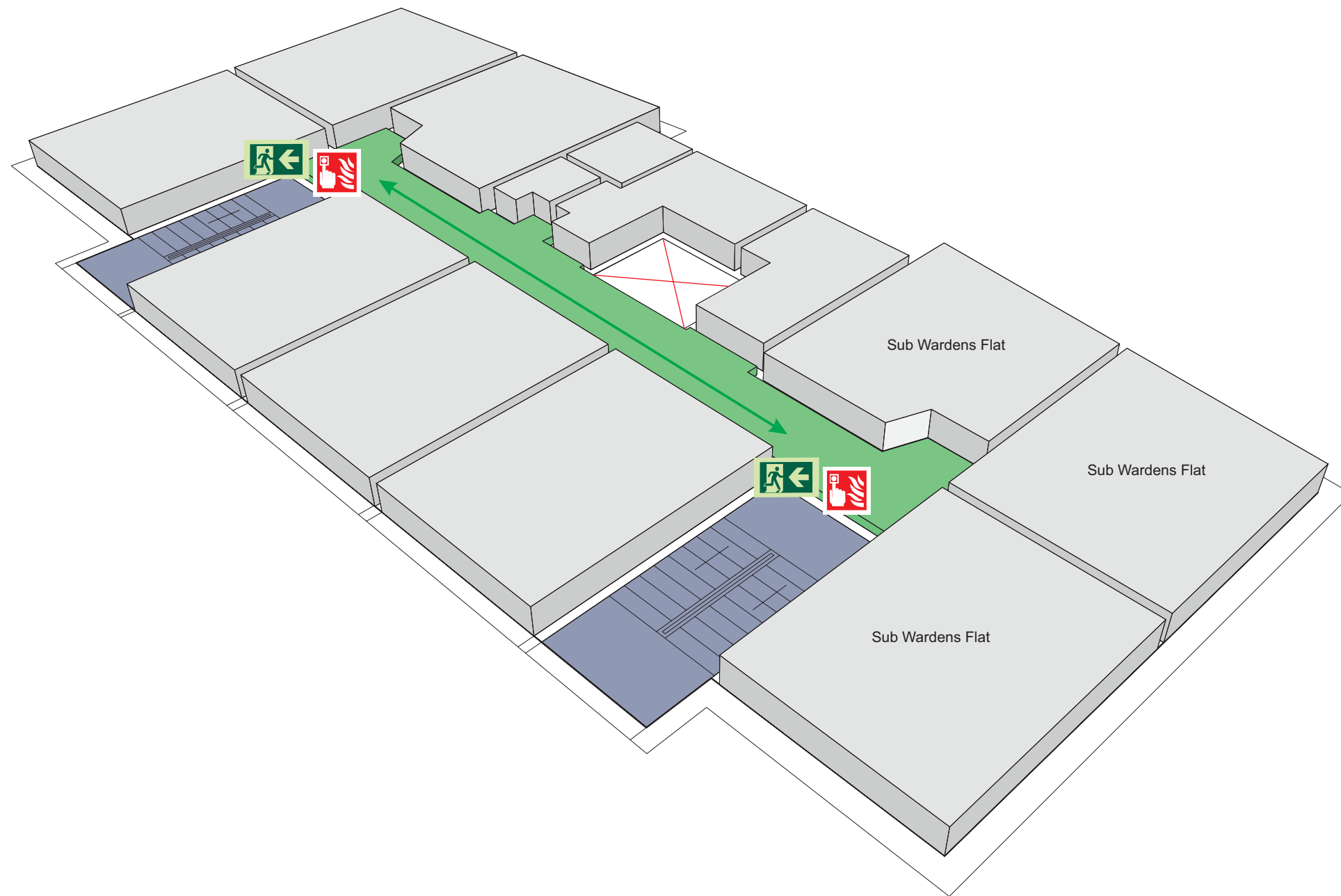


When alarm is given - do not panic, do not run.  
Leave the building following the fire emergency exit signs.

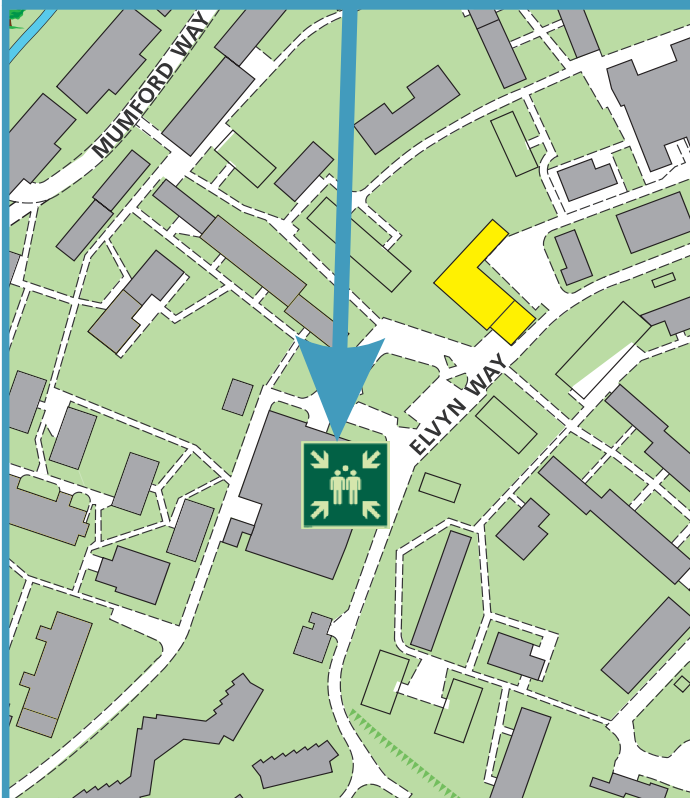


Do not re-enter the building unless told to do so by the Fire Marshall, Warden or Fire Service.

## Whitworth Building Second Floor



ASSEMBLY POINT 25 IS ALLOCATED TO THE BUILDINGS SHOWN IN YELLOW



Fire alarm  
Call point



Fire exit



Wheelchair  
accessible exit



Fire escape route



Assembly point



Safe refuge



Evac lift



Evac coms



Non evac coms

# FIRE ESCAPE PLAN

## LOUGHBOROUGH UNIVERSITY FIRE INSTRUCTIONS

### ANY PERSON DISCOVERING A FIRE



Sound the alarm.  
Operate the nearest fire alarm call point.



Telephone Security on the emergency number 0800 526966.



Do not attack fire with extinguisher unless trained to do so.

### ON HEARING THE ALARM



Evacuate building and go to assembly point.  
Your assembly point is:-

**Assembly Point 25**

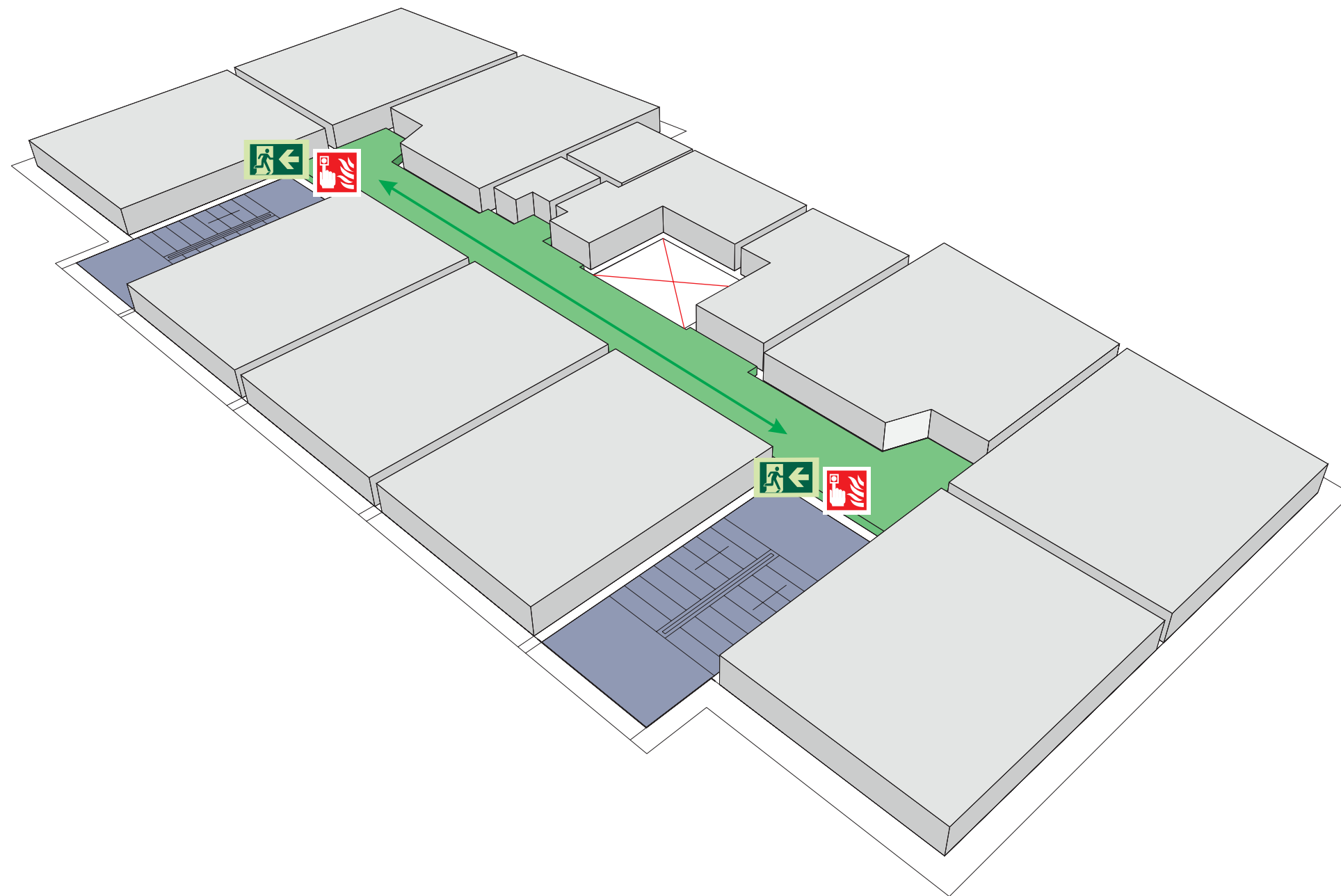


When alarm is given - do not panic, do not run.  
Leave the building following the fire emergency exit signs.

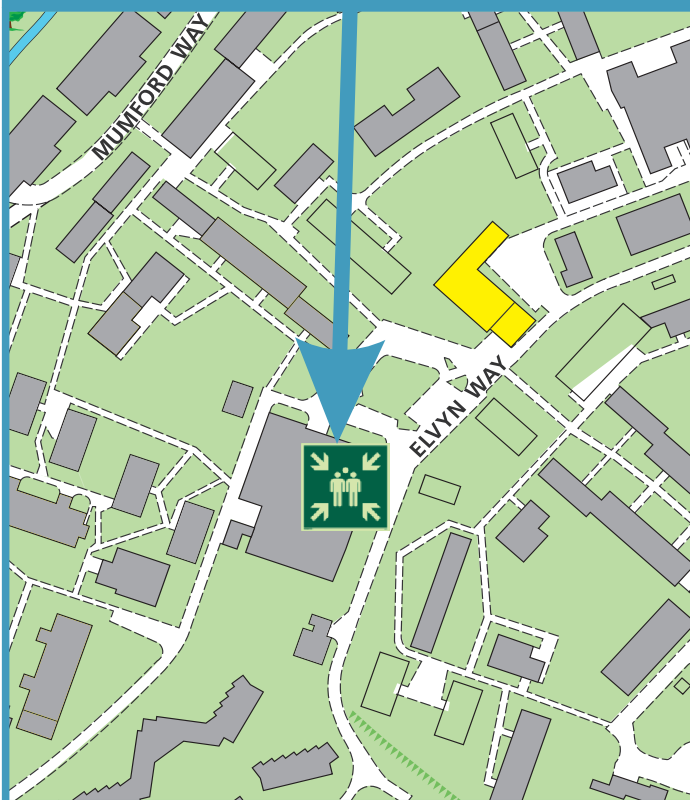


Do not re-enter the building unless told to do so by the Fire Marshall, Warden or Fire Service.

## Whitworth Building Third Floor



ASSEMBLY POINT 25 IS ALLOCATED TO THE BUILDINGS SHOWN IN YELLOW



Fire alarm  
Call point



Fire exit



Wheelchair  
accessible exit



Fire escape route



Assembly point



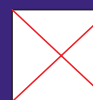
Safe refuge



Evac lift



Evac coms



Non evac coms

Loughborough  
University

# FIRE ESCAPE PLAN

## LOUGHBOROUGH UNIVERSITY FIRE INSTRUCTIONS

### ANY PERSON DISCOVERING A FIRE



Sound the alarm.  
Operate the nearest fire alarm call point.



Telephone Security on the emergency number 0800 526966.



Do not attack fire with extinguisher unless trained to do so.

### ON HEARING THE ALARM



Evacuate building and go to assembly point.  
Your assembly point is:-

**Assembly Point 25**

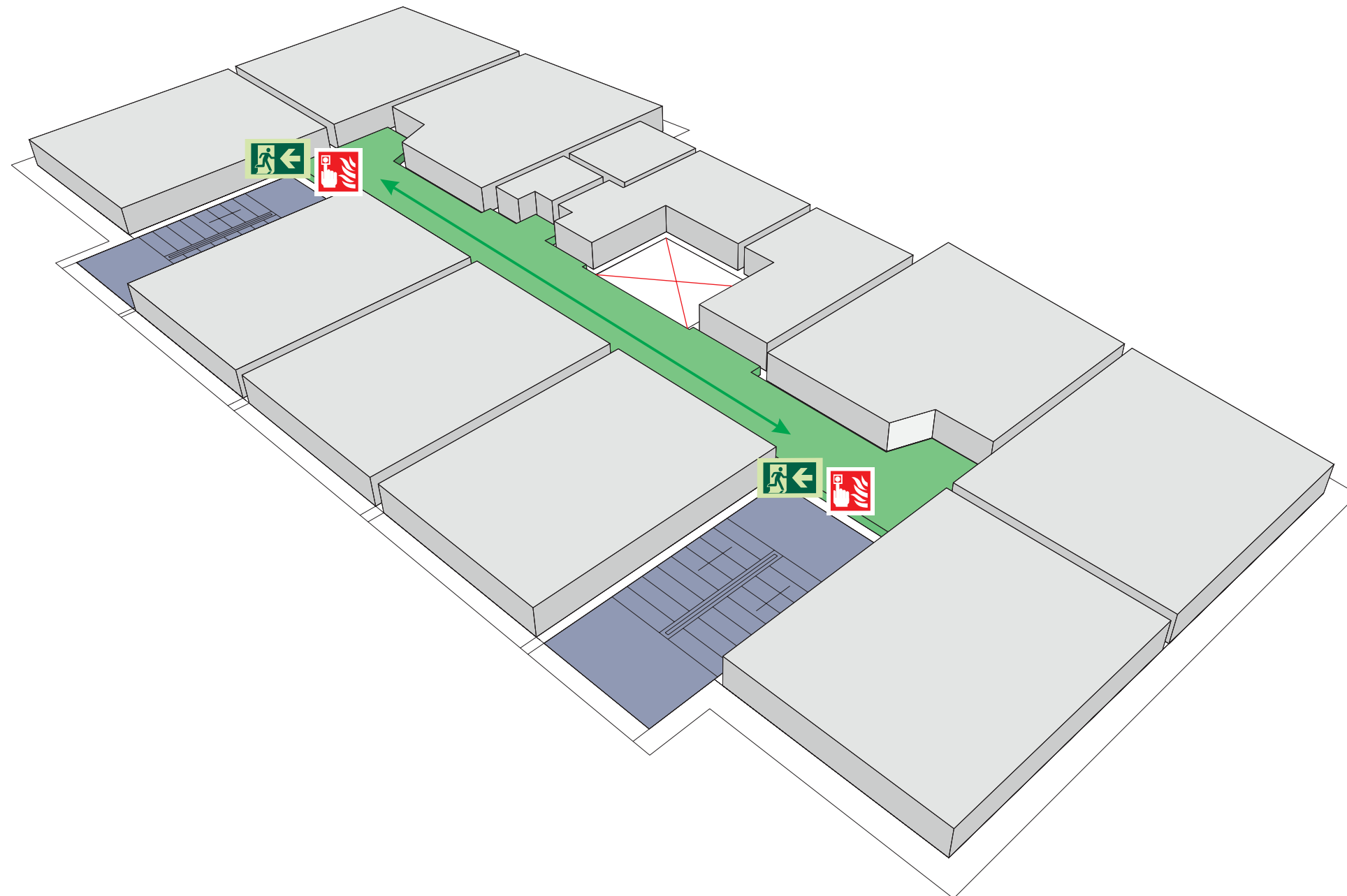


When alarm is given - do not panic, do not run.  
Leave the building following the fire emergency exit signs.

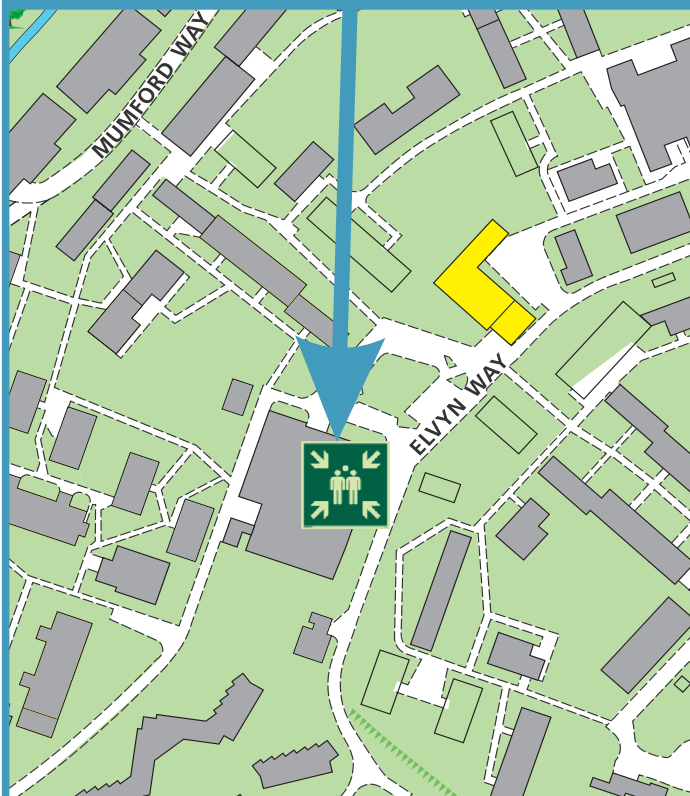


Do not re-enter the building unless told to do so by the Fire Marshall, Warden or Fire Service.

## Whitworth Building Fourth Floor



ASSEMBLY POINT 25 IS ALLOCATED TO THE BUILDINGS SHOWN IN YELLOW



Fire alarm  
Call point



Fire exit



Wheelchair  
accessible exit



Fire escape route



Assembly point



Safe refuge



Evac lift



Evac coms



Non evac coms

Loughborough  
University

# FIRE ESCAPE PLAN

## LOUGHBOROUGH UNIVERSITY FIRE INSTRUCTIONS

### ANY PERSON DISCOVERING A FIRE



Sound the alarm.  
Operate the nearest fire alarm call point.



Telephone Security on the emergency number 0800 526966.



Do not attack fire with extinguisher unless trained to do so.

### ON HEARING THE ALARM



Evacuate building and go to assembly point.  
Your assembly point is:-

**Assembly Point 25**

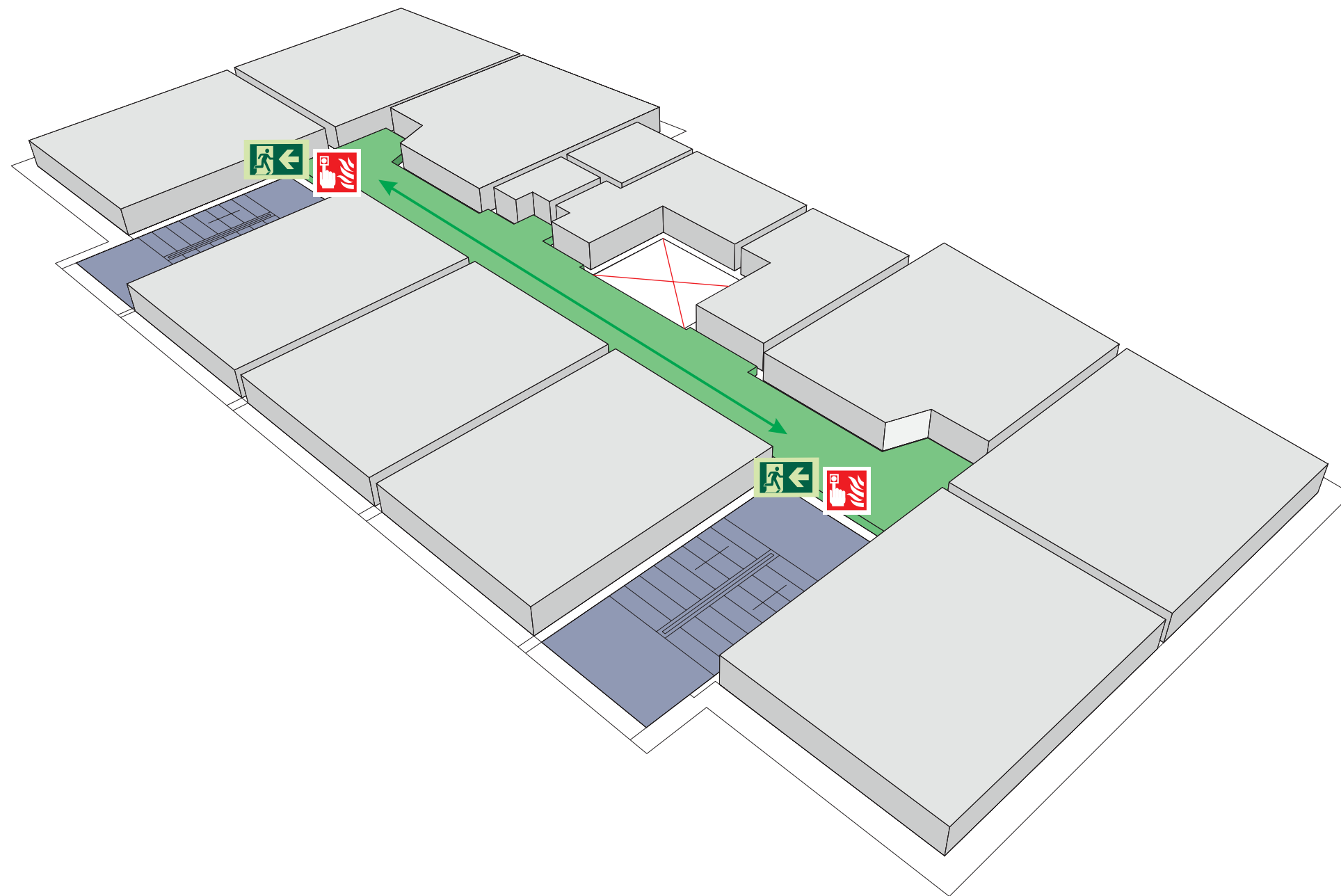


When alarm is given - do not panic, do not run.  
Leave the building following the fire emergency exit signs.

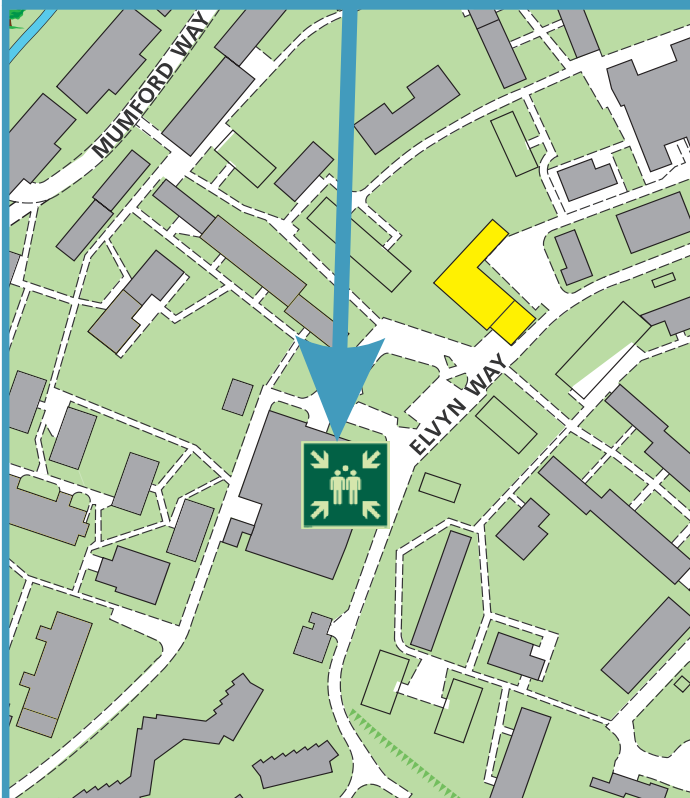


Do not re-enter the building unless told to do so by the Fire Marshall, Warden or Fire Service.

## Whitworth Building Fifth Floor



ASSEMBLY POINT 25 IS ALLOCATED TO THE BUILDINGS SHOWN IN YELLOW



Fire alarm  
Call point



Fire exit



Wheelchair  
accessible exit



Fire escape route



Assembly point



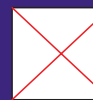
Safe refuge



Evac lift



Evac coms



Non evac coms

Loughborough  
University

# FIRE ESCAPE PLAN

## LOUGHBOROUGH UNIVERSITY FIRE INSTRUCTIONS

### ANY PERSON DISCOVERING A FIRE



Sound the alarm.  
Operate the nearest fire alarm call point.



Telephone Security on the emergency number 0800 526966.



Do not attack fire with extinguisher unless trained to do so.

### ON HEARING THE ALARM



Evacuate building and go to assembly point.  
Your assembly point is:-

**Assembly Point 25**

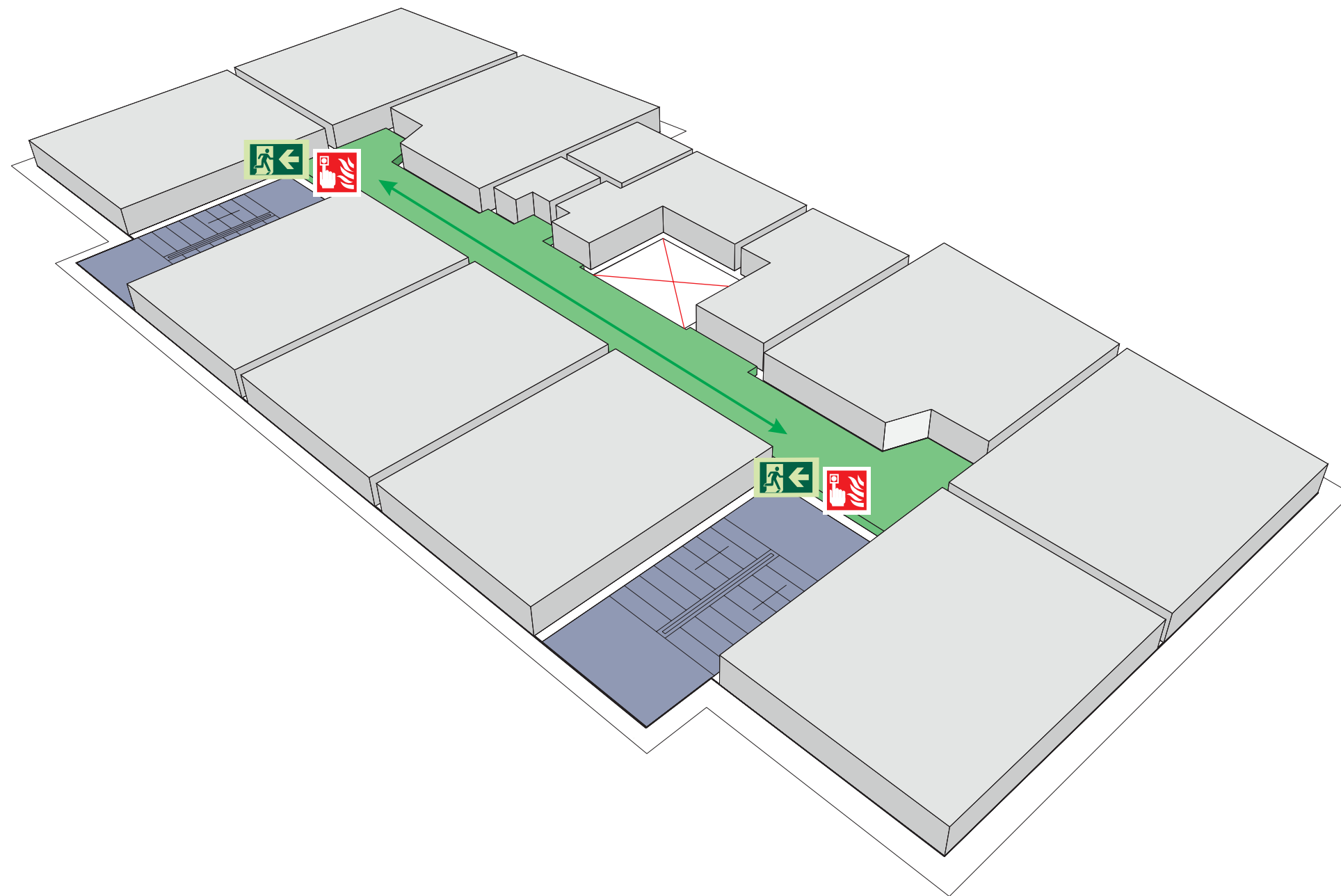


When alarm is given - do not panic, do not run.  
Leave the building following the fire emergency exit signs.

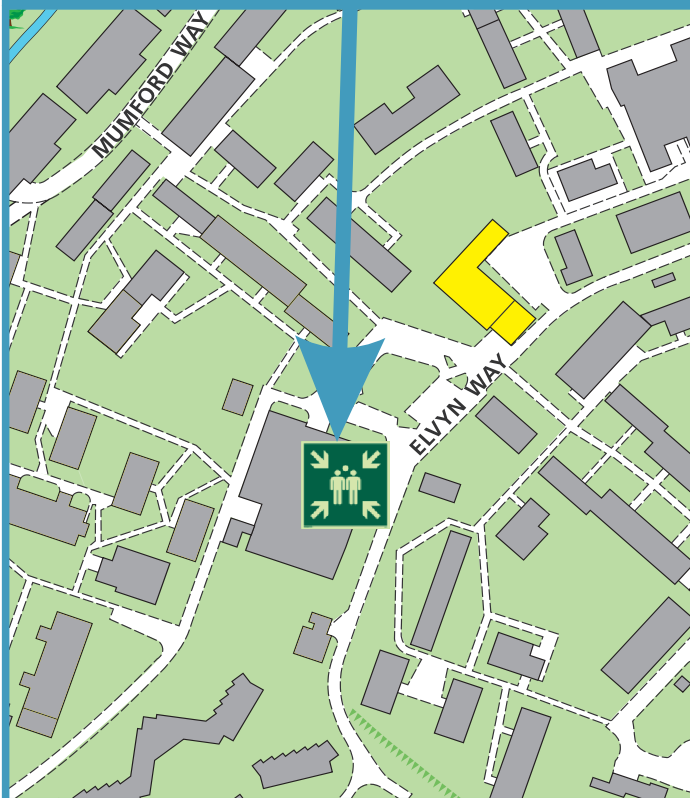


Do not re-enter the building unless told to do so by the Fire Marshall, Warden or Fire Service.

## Whitworth Building Sixth Floor



ASSEMBLY POINT 25 IS ALLOCATED TO THE BUILDINGS SHOWN IN YELLOW



Fire alarm  
Call point



Fire exit



Wheelchair  
accessible exit



Fire escape route



Assembly point



Safe refuge



Evac lift



Evac coms



Non evac coms

Loughborough  
University



# FIRE ESCAPE PLAN

## LOUGHBOROUGH UNIVERSITY FIRE INSTRUCTIONS

### ANY PERSON DISCOVERING A FIRE



Sound the alarm.  
Operate the nearest fire alarm call point.



Telephone Security on the emergency  
number 0800 526966.



Do not attack fire with extinguisher  
unless trained to do so.

### ON HEARING THE ALARM



Evacuate building and go to assembly  
point.  
Your assembly point is:-

**Assembly Point 25**

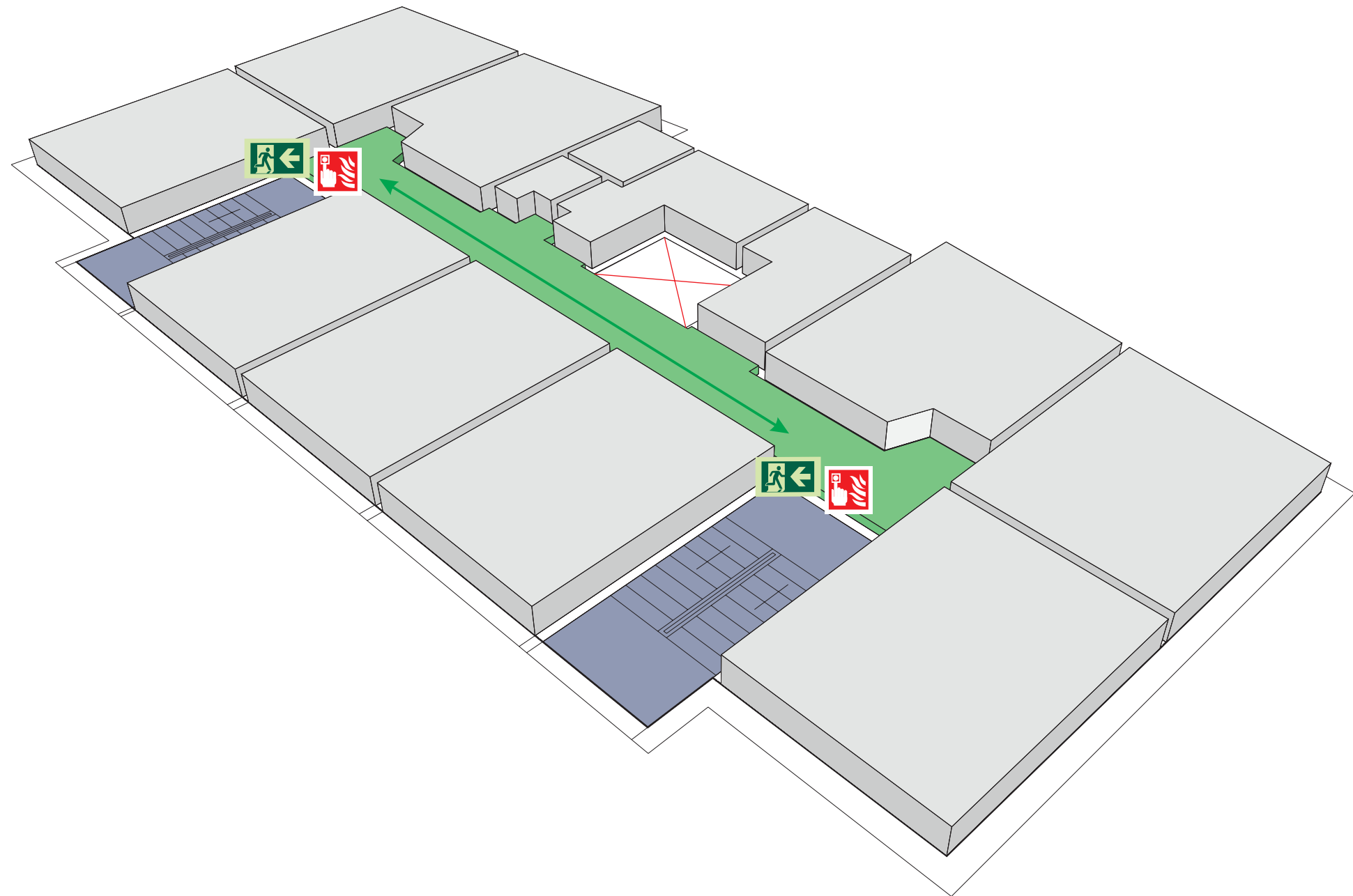


When alarm is given - do not panic, do  
not run.  
Leave the building following the fire  
emergency exit signs.

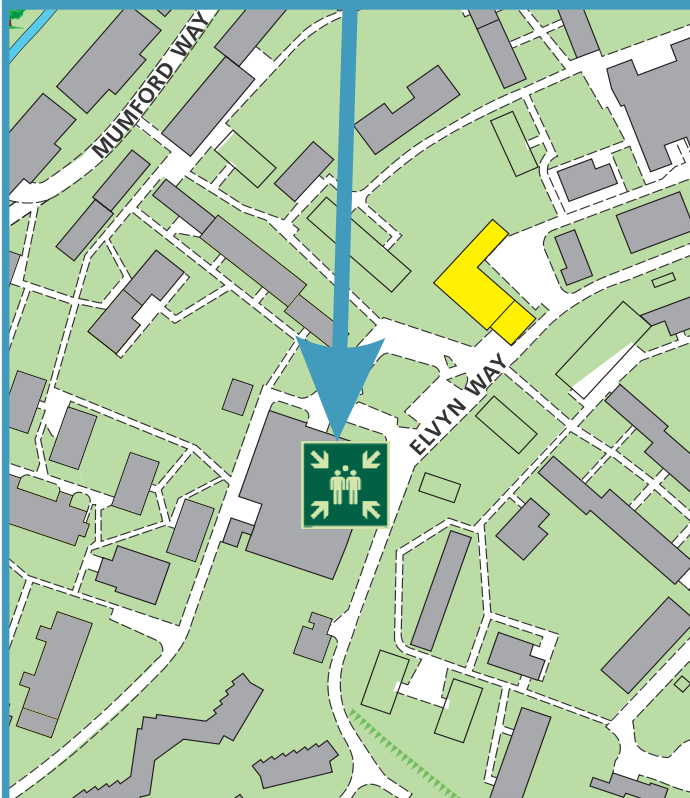


Do not re-enter the building unless told  
to do so by the Fire Marshall, Warden or  
Fire Service.

## Whitworth Building Seventh Floor



ASSEMBLY POINT 25 IS ALLOCATED TO THE  
BUILDINGS SHOWN IN YELLOW



Fire alarm  
Call point



Fire exit



Wheelchair  
accessible exit



Fire escape route



Assembly point



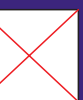
Safe refuge



Evac lift



Evac coms



Non evac coms

Loughborough  
University

# FIRE ESCAPE PLAN

## LOUGHBOROUGH UNIVERSITY FIRE INSTRUCTIONS

### ANY PERSON DISCOVERING A FIRE



Sound the alarm.  
Operate the nearest fire alarm call point.



Telephone Security on the emergency number 0800 526966.



Do not attack fire with extinguisher unless trained to do so.

### ON HEARING THE ALARM



Evacuate building and go to assembly point.  
Your assembly point is:-

**Assembly Point 25**

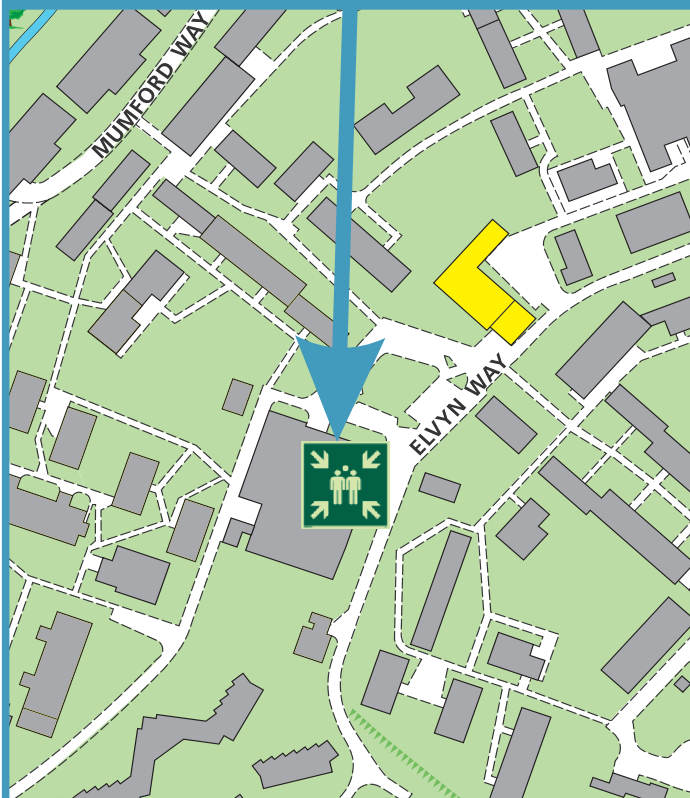


When alarm is given - do not panic, do not run.  
Leave the building following the fire emergency exit signs.

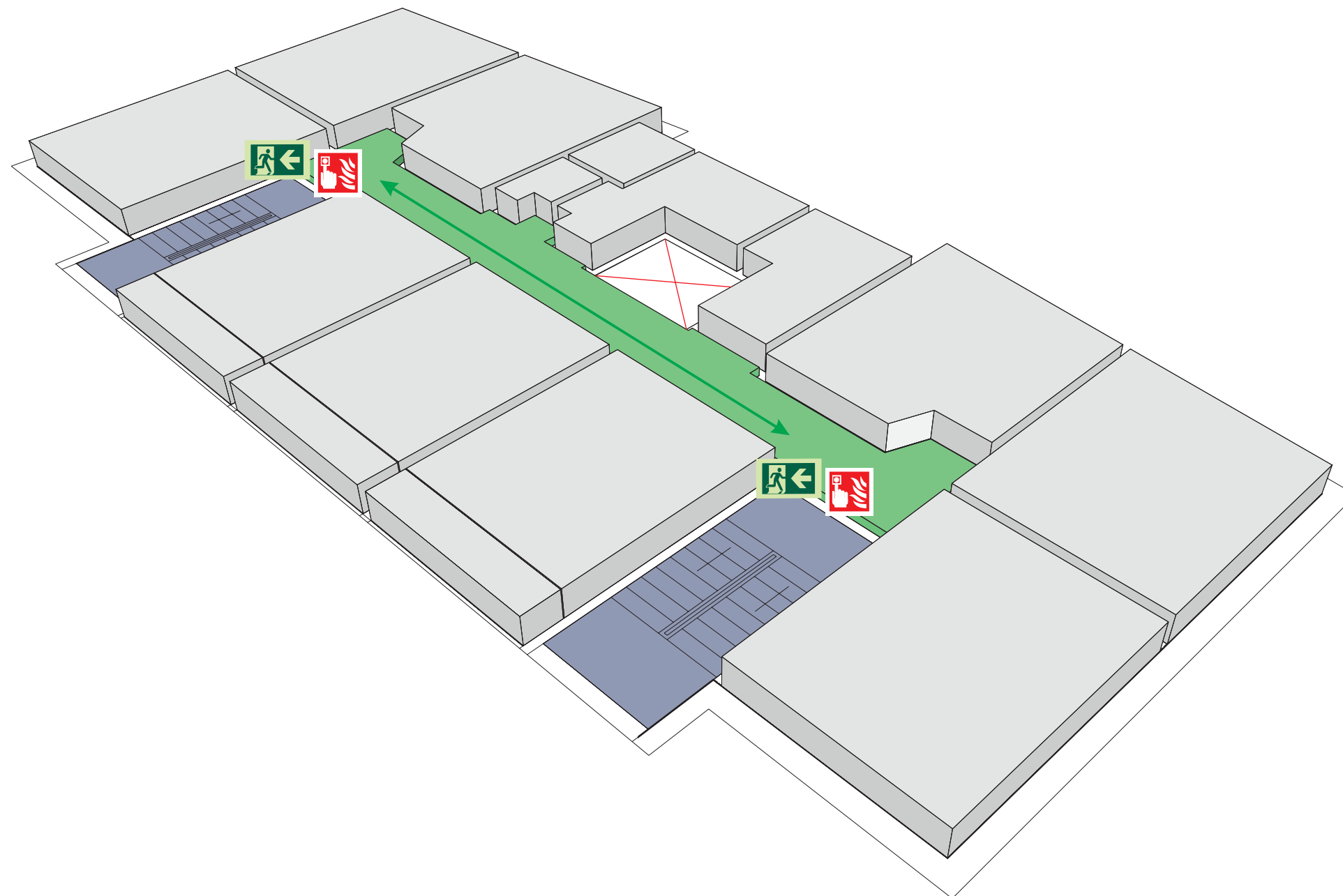


Do not re-enter the building unless told to do so by the Fire Marshall, Warden or Fire Service.

ASSEMBLY POINT 25 IS ALLOCATED TO THE BUILDINGS SHOWN IN YELLOW



## Whitworth Building Eighth Floor



Fire alarm  
Call point



Fire exit



Wheelchair  
accessible exit



Fire escape route



Assembly point



Safe refuge



Evac lift



Evac coms



Non evac coms

Loughborough  
University

# FIRE ESCAPE PLAN

## LOUGHBOROUGH UNIVERSITY FIRE INSTRUCTIONS

### ANY PERSON DISCOVERING A FIRE



Sound the alarm.  
Operate the nearest fire alarm call point.



Telephone Security on the emergency  
number 0800 526966.



Do not attack fire with extinguisher  
unless trained to do so.

### ON HEARING THE ALARM



Evacuate building and go to assembly  
point.  
Your assembly point is:-

**Assembly Point 25**

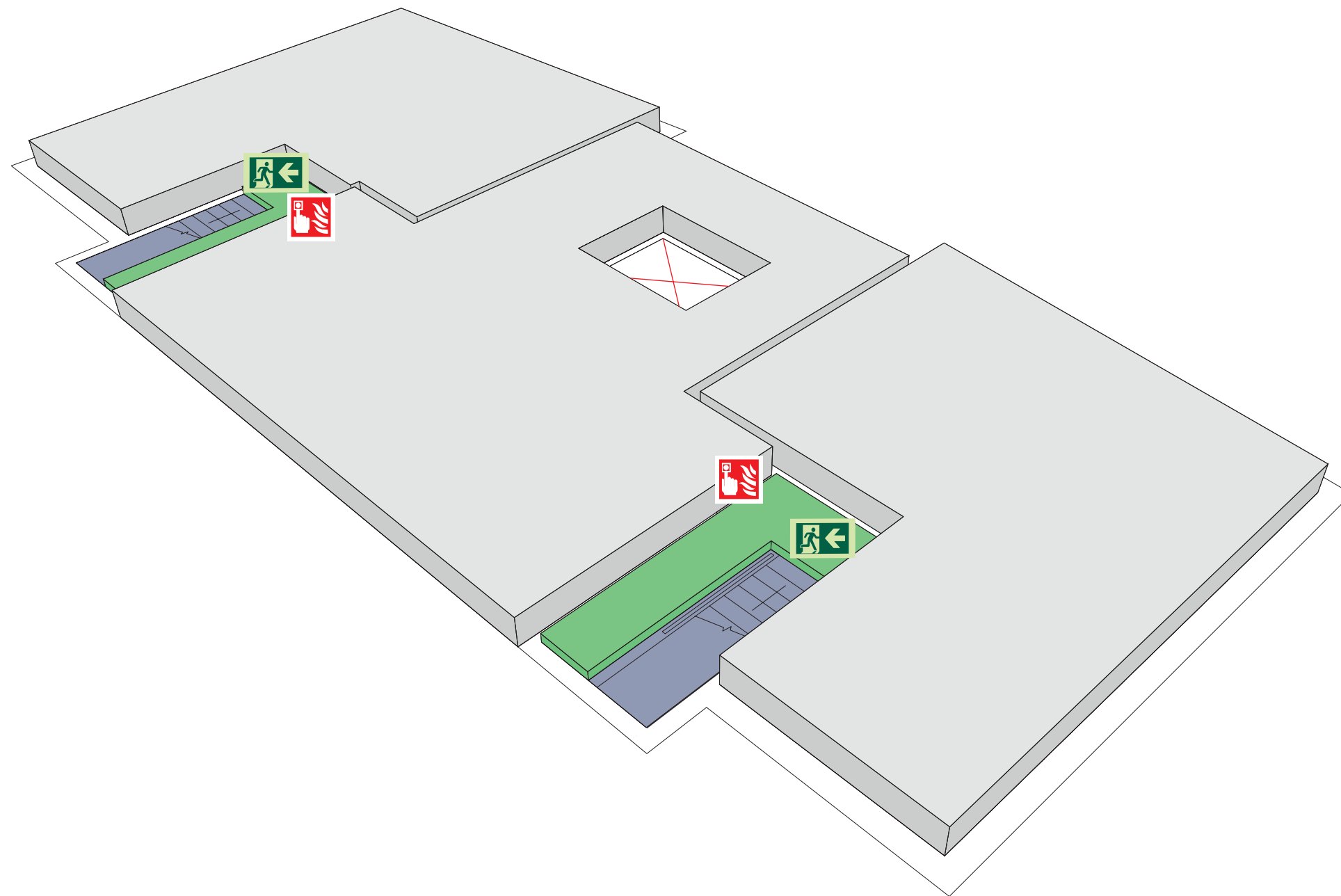
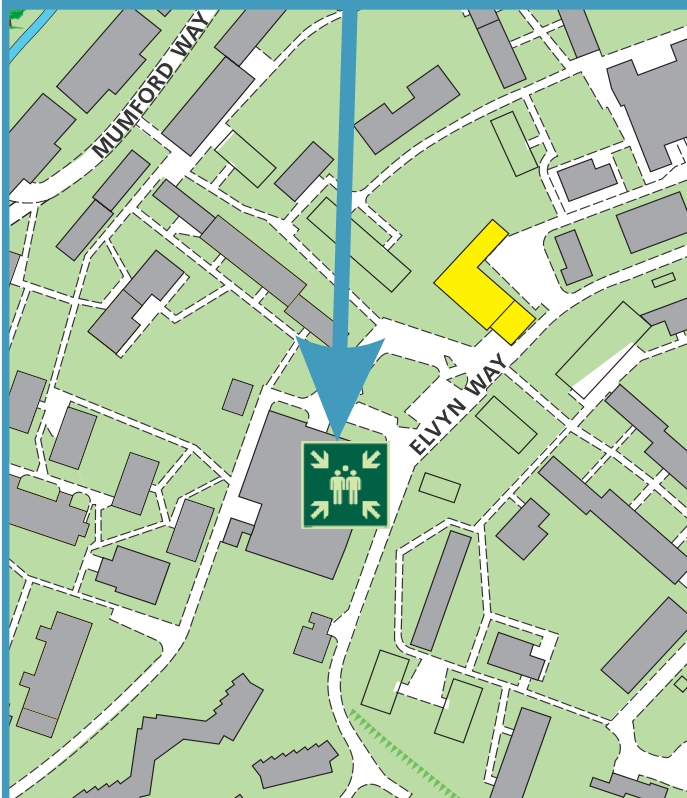


When alarm is given - do not panic, do  
not run.  
Leave the building following the fire  
emergency exit signs.



Do not re-enter the building unless told  
to do so by the Fire Marshall, Warden or  
Fire Service.

ASSEMBLY POINT 25 IS ALLOCATED TO THE  
BUILDINGS SHOWN IN YELLOW



## Whitworth Building Plant Room



Fire alarm  
Call point



Fire exit



Wheelchair  
accessible exit



Fire escape route



Assembly point



Safe refuge



Evac lift



Evac coms



Non evac coms

Loughborough  
University